



*"The lesson was really cool and interactive. My pupils got to problem-solve, build and use their hands – the kids who can't read were fine, too – and it incorporates technology, which is very motivating."*

3<sup>rd</sup> Grade Teacher  
Rockaway Borough,  
New Jersey, USA

PRIMARY SCHOOL

# LEGO® Education SPIKE™ Essential

Ignite primary school pupils' passion for STEAM learning through playful problem-solving, preparing them to be resilient, independent thinkers.

Part of the LEGO® Learning System, SPIKE Essential engages pupils in hands-on investigation of STEAM concepts while contributing to literacy, maths and social-emotional development. Curriculum-aligned learning units use everyday themes, relatable minifigures with different personalities and familiar LEGO® building elements to solve problems through storytelling.

Flexible built-in scaffolding and competency-based professional development opportunities make it easy for teachers to get started and move from one unit to the next.

Learn more about SPIKE Essential at: [LEGOeducation.com/SPIKEessential](https://LEGOeducation.com/SPIKEessential)



PRIMARY SCHOOL

# LEGO® Education SPIKE™ Essential

## Classroom Set (45345)

- 449 LEGO® bricks (including replacement pack)
- LEGO® Education SPIKE™ App (pupil-facing app including all learning activities)

## Support for Teachers

- Comprehensive lesson plans featuring 50 hours of instructional content
- Onboarding and introductory material
- Classroom implementation support
- Assessment tools
- Hybrid learning resources

## Extend the Learning Experience

- Facilitated training with a LEGO® Education Certified Trainer
- LEGO® Education Personal Learning Kit Essential for hybrid learning (2000481)
- LEGO® Education BricQ\_Motion Essential Set (45401)



## Curriculum-aligned STEAM lessons covering:

- Computational thinking
- Design engineering
- Oral communication
- Energy, energy transfer and collision
- Social-emotional development

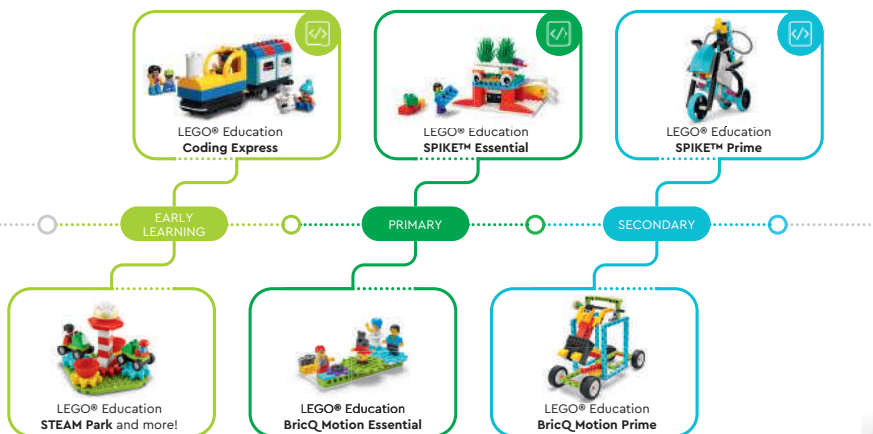


## Explore with Competitions

SPIKE Essential's Explore unit allows teams of pupils to practise teamwork and collaboration in the FIRST® LEGO® League Explore Division, where they'll be introduced to STEM, coding and robotics design as they complete fun real-world challenges.

Learn more at: [firstlegoleague.org](http://firstlegoleague.org)

## About LEGO® Education



LEGO® Education offers a range of playful, hands-on STEAM learning experiences based on the LEGO® system of bricks – that meet pupils wherever they are in their learning journey, regardless of their ability. From the Early Learning portfolio to the LEGO® Learning System, our solutions create an environment where active, collaborative learners future-proof their skills and spark a lifelong love of learning, whether it's in-person, virtual or a mix of both.

Read about our solutions at: [LEGOeducation.co.uk](http://LEGOeducation.co.uk)

Distributor Info:



**Getech Ltd.**  
Solutions Centre  
Knightsdale Road  
Ipswich IP1 4JQ

[www.getech.co.uk/LEGO](http://www.getech.co.uk/LEGO)  
[lego@getech.co.uk](mailto:lego@getech.co.uk)  
Telephone: 01473 243400

